

TECH TIPS

Issue #15 April 2007

Passivation of Stainless Steel

Stainless Steel

When stainless steel is newly made it is cleaned of oils and greases used in the fabrication process, and acid, usually nitric, is used to remove free iron from the surface. Slowly and naturally a passive layer develops on the surface of the steel as the chromium at the surface reacts with oxygen in the air to produce chromium oxide. The term passive refers to steel now being 'unreactive'.



This layer is invisible and only a few molecules thick but it provides a barrier to prevent oxygen and moisture from reaching the iron underneath. If oxygen got to the iron, the iron would oxidize or rust, producing an unwanted yellow to orange-red color and over the long term, weakening the steel.

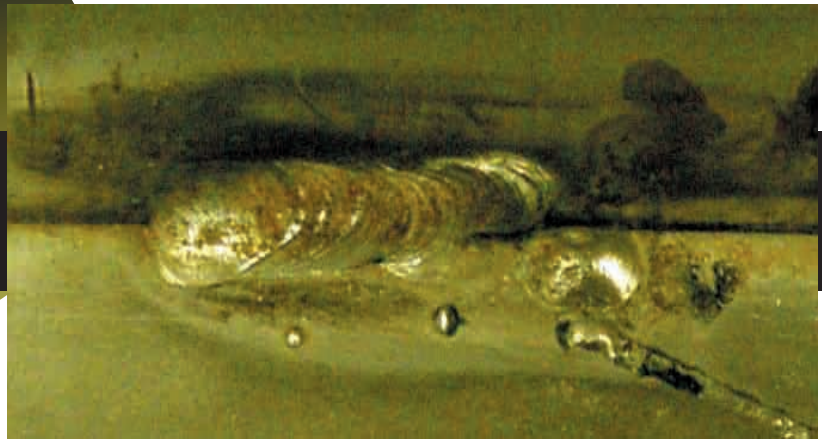
Surface Damage

After stainless steel equipment has been installed and is in operation the existing passive layer can be damaged or removed by physical abrasion (brushing, grinding, scraping) or by chemical reactions. It can also be weakened by physical damage due to expansion and contraction caused by heating and cooling. If this damage happens faster than the passive layer can heal itself naturally, rusting will result.

The natural reaction of oxygen from the air combining with chromium from the steel to produce chromium oxide may be interfered with by the processing going on or chemicals that are in contact with the surface. The regeneration of the passive oxide layer might not be adequate to provide constant protection. A more effective passive layer can be produced by chemical methods.

JohnsonDiversey





What is Chemical Passivation?

Chemical passivation is a two step process.

The first step is to remove any free iron or iron compound that is on the surface, otherwise this iron will create a localized site where corrosion can continue. Acid is used to dissolve away the iron and its compounds. The surface itself is not affected by this process.

The second step is to use an oxidizer to force the conversion of chromium metal on the surface to the oxide form. This will create the uniform chromium oxide protective layer.



How is it Done?

Most Common Method – Nitric Acid
The most commonly used chemical method to passivate a stainless steel surface is to apply nitric acid. Nitric is a strong mineral acid so it can quickly dissolve all iron compounds and other trace metals that are on the surface.

Nitric acid is also a strong oxidizer so it can generate the chromium oxide layer at the same time.

Even though nitric acid is a strong chemical, high temperatures and extended times are used to ensure the reaction is effective and complete. The application condition ranges are:

Time: 20 minutes to 2 hours
Temp: up to 70°C (160°F)
Conc: 20 to 50% by volume
nitric acid

Note: Under these conditions nitric acid is very aggressive on gaskets and it may be necessary to replace them after a passivation procedure.

Other Methods

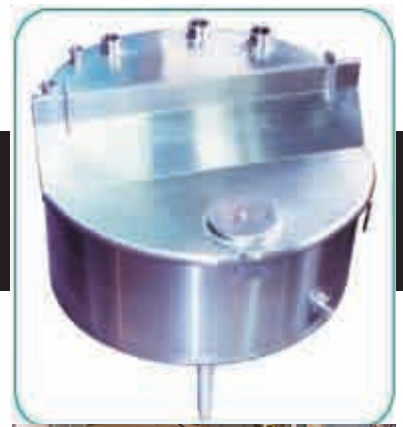
1. Citric acid is also sometimes used for passivating stainless steel. It is an acid that can effectively remove iron and its compounds from surfaces.

Time: variable
Temp: ambient temp. to moderate heating
Conc: 4 to 10% by weight

This method is being promoted because citric acid is safer to use than nitric acid, is biodegradable, produces fewer effluent concerns and is also used as a food ingredient.

Citric acid does an excellent job of removing iron from surfaces, which is the first step of traditional passivation. It is not an oxidizer and so it cannot oxidize chromium which is the second step of classic passivation. It therefore cannot build up the protective layer so this process depends on natural air oxidation. Citric acid is mostly used on small parts that will not be used in aggressive chemical or physical environments.

2. Dichromate is a very strong oxidizer that is sometimes added to nitric acid solutions to improve the oxidation of chromium. Dichromate is toxic and is not permitted in industrial effluent so food plants stay away from using it.



When to Passivate

There is no simple rule that says when a piece of equipment must be passivated. The need will vary according to how the equipment is being used and whether the surface has been damaged. Some companies will choose to passivate processing equipment once per year as a scheduled maintenance procedure. Other companies will do it more frequently because they are processing foods that are aggressive on the stainless steel. Aggressive foods are those that contain high chloride levels and are acidic, for example salsa, tomato juice, etc. Plants that use water that has a naturally high chloride level may have to passivate more frequently since the chloride will disrupt the protective layer. Pharmaceutical companies that use ultra pure water for injection are known to passivate 4 times per year because the high purity water itself is hard on the surface layer!

Many times companies will passivate when they notice iron deposits forming on the stainless steel and it is not coming from the water. There are test kits available from chemical supply firms that will test for free surface iron. If a high level is found, it could be time to passivate.

Recommended Products and Protocol

Pascal

This is a high concentration nitric acid product suitable for passivation. Ensure complete rinsing after the passivation is done.

Super Dilac

Not as high concentration of nitric acid but can also be used in passivation.

Benefit

Chlorinated, alkaline product used to thoroughly clean equipment, which has been used in food production, prior to passivation.

APC-NS or Solvent Cleaner

If the surface has oils and greases on it, especially a new installation, it is recommended to remove them using a solvent-type cleaner at 2 – 4 ounces per gallon (15 – 30 ml/l) at 140°F (60°C) for 30 minutes.

JohnsonDiversey PASSIVATION PROTOCOL

AREA:	CUSTOMER:	PROTOCOL: Special								
EQUIPMENT: Silos, Tanks & Lines	ADDRESS:	DATE:								
<table style="width: 100%; border-collapse: collapse;"> <thead> <tr> <th style="text-align: left; border-bottom: 1px solid black;">PRODUCT</th> <th style="text-align: left; border-bottom: 1px solid black;">CONC.</th> </tr> </thead> <tbody> <tr> <td>Pascal</td> <td>20%</td> </tr> <tr> <td>Benefit (VC 62)</td> <td>1%</td> </tr> <tr> <td>APC-NS</td> <td>2 - 4%</td> </tr> </tbody> </table>	PRODUCT	CONC.	Pascal	20%	Benefit (VC 62)	1%	APC-NS	2 - 4%	<h2 style="margin: 0;"><i>Passivation Steps</i></h2> <p>Theory: Stainless steel is composed of iron (Fe); nickel (Ni); chromium (Cr) and several other minor components. Stainless steel is not resistant to chemical or physical attack. The corrosion resistance of stainless steel depends on the formation of a 'passive surface film' composed of nickel and chromium oxides (Cr₂O₃ & NiO).</p> <p>Passivation involves removing free Fe or 'tramp Fe' from the stainless steel surface. This is the purpose of Pascal. The nitric acid in Pascal enriches the stainless steel with Cr & Ni. The oxides (Cr₂O₃ & NiO) then form and a passive surface now is in place.</p> <p>Steps:</p> <ol style="list-style-type: none"> 1. If the equipment has been used, thoroughly wash the surface with a chlorinated alkaline detergent such as Benefit. If the surfaces are new and machine oil may be present, utilize APC-NS. Keep in mind the key to a good passivation is beginning with a SCRUPULOUSLY CLEAN SURFACE. 2. Rinse the system with water. 3. Prepare a 20% solution of Pascal (1 gallon of Pascal plus 4 gallons of water). Heat the solution to 140°F (60°C) and circulate for 1 hour at temperature. 4. Drain the system and rinse with clean water. Check the pH of the water to insure all the acid is removed 5. Allow the system to air-dry overnight. 6. Sanitize all surfaces prior to production. <p>Notes:</p> <p>⇒ The concentration of Pascal required to produce a passive surface on stainless steel may also be aggressive against gaskets if they are old or of low quality. Therefore, it is best to perform the passivation just prior to outfitting equipment with new gaskets.</p> <p>⇒ When to passivate? This depends on a number of factors, but generally passivation is preformed when:</p> <ul style="list-style-type: none"> -New equipment has been installed. -Repairs (i.e. welding) have occurred. -Aggressive products (high salt/low pH) are processed through the equipment. -Equipment surfaces appear dull and dark. 	
PRODUCT	CONC.									
Pascal	20%									
Benefit (VC 62)	1%									
APC-NS	2 - 4%									
<u>SAFETY EQUIPMENT</u>										
GOGGLES/FACE SHIELD YES										
RUBBER BOOTS YES										
RUBBER APRON YES										
GLOVES YES										
HARD HAT NO										
RESPIRATOR NO										
<u>TEST KITS</u>										
Alkaline # 409879										
Acid # 409724										
<u>FREQUENCY</u>										
Yearly, or as required										
<u>CLEANED BY</u>										
<u>SPECIAL PRECAUTIONS</u>										
ALWAYS WEAR PROPER PROTECTIVE CLOTHING. NEVER ADD WATER TO CHEMICAL ALWAYS ADD CHEMICAL TO WATER. REPORT ALL ACCIDENTS IMMEDIATELY!										
<u>TOOLS AND EQUIPMENT</u>										
Developed by JohnsonDiversey Training Department										
CUSTOMER SERVICE 1-800-233-1000										

JohnsonDiversey
United States
3630 East Kemper Road
Cincinnati, Ohio 45241
p: 1-800-233-1000
f: 513-956-4841

JohnsonDiversey
Canada
2401 Bristol Circle
Oakville, Ontario L6H 6P1
p: 1-800-233-1000
f: 905-829-1218

Or visit our website at: www.johnsondiversey.com

